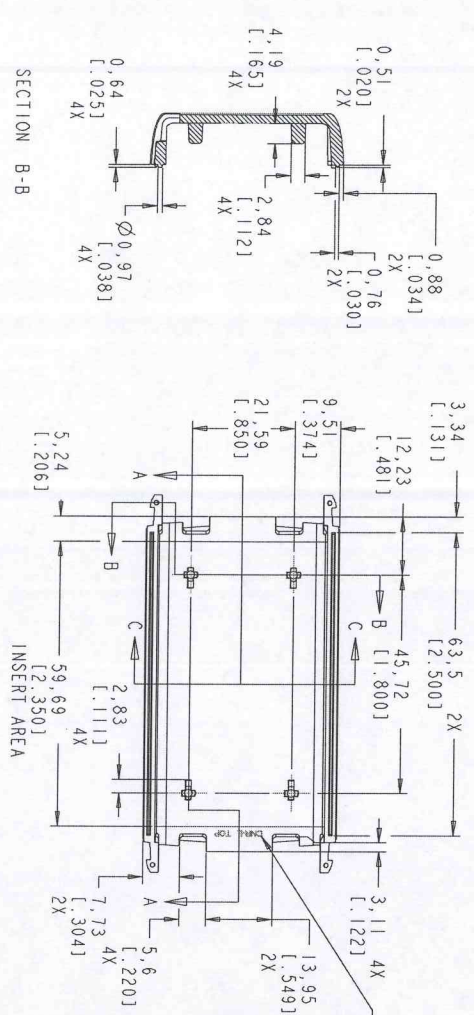
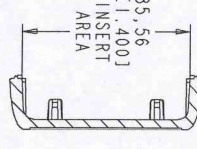
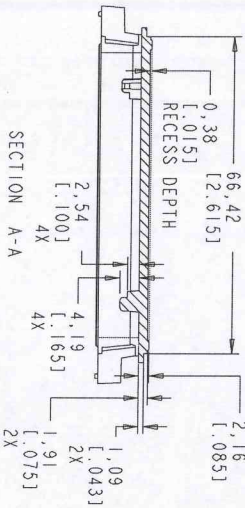
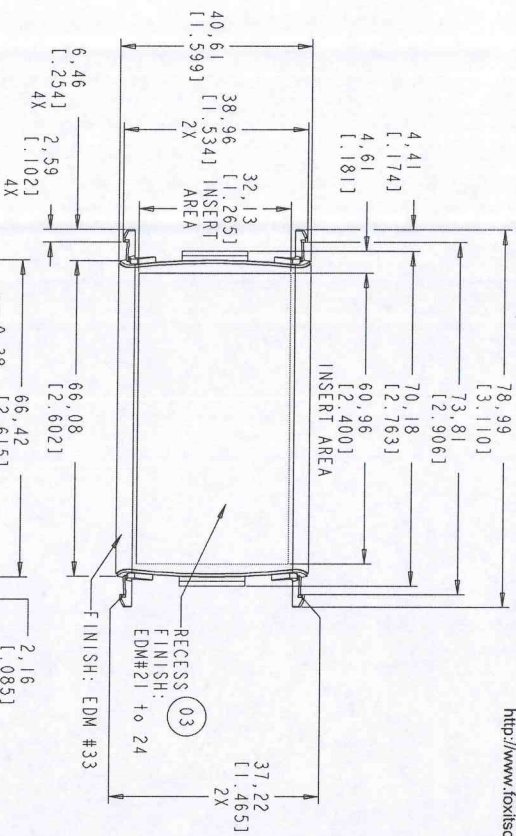


REVISIONS		DATE	INT
LET	ECN	DESCRIPTION	
01		INITIAL RELEASE	04-08-12 Janves
02		CHANGED RECESS TEXTURE TO EDM, ADDED CAVITY ID	05-21-12 JMM

NOTES:

- FOR LIST OF MATERIAL SEE:  
PL 115127-501
- UNLESS OTHERWISE SPECIFIED:  
CORNERS SHOWN SHARP HAVE  
A RADIUS OF .01.
- NO KNOCKOUTS, GATES OR FLASH  
ON THE EXTERIOR SURFACES.
- FLASH PERMISSIBLE WITHIN .005 INCH.
- KNOCKOUTS FLUSH TO .005 BELOW SURFACE.
- TEXTURE: EDM #33
- LABEL RECESS: EDM# 21 TO #24
- INTERIOR FINISH:  
SPI C3 OR BETTER  
INTERIOR SIDEWALLS MAY HAVE EDM #30  
FINISH (FOR PROCESSING PURPOSES)



**PACNITEG**  
 Subsidiary of LaFrance Corp.  
 One LaFrance way, Concordville, Pa. 19332-5002 U.S.A.

THESE ARE PRODUCTION	NAME	DATE	CNR-L TOP COVER
MOLDED TOLERANCE: PRODUCT WILL BE PRODUCED PER SPI-SPE INSTITUTE PRODUCT STANDARDS AND TOLERANCES	DRAWN: Janves	04-08-12	
MACHINED: ANGLES: ±1/2° DECIMALS: XX ± .02 XXX ± .014	CHECK: Ted	04-08-12	
	APPROVE: JMM	04-24-12	
	MATERIAL: ABS	PROCESS: INJ MOLDED	
	COLOR: SEE PARTS LIST	PART # 11517-01	DRAWING NUMBER 115117-01
		SCALE: 1:1	SHEET 1 OF 1
			REV 02

