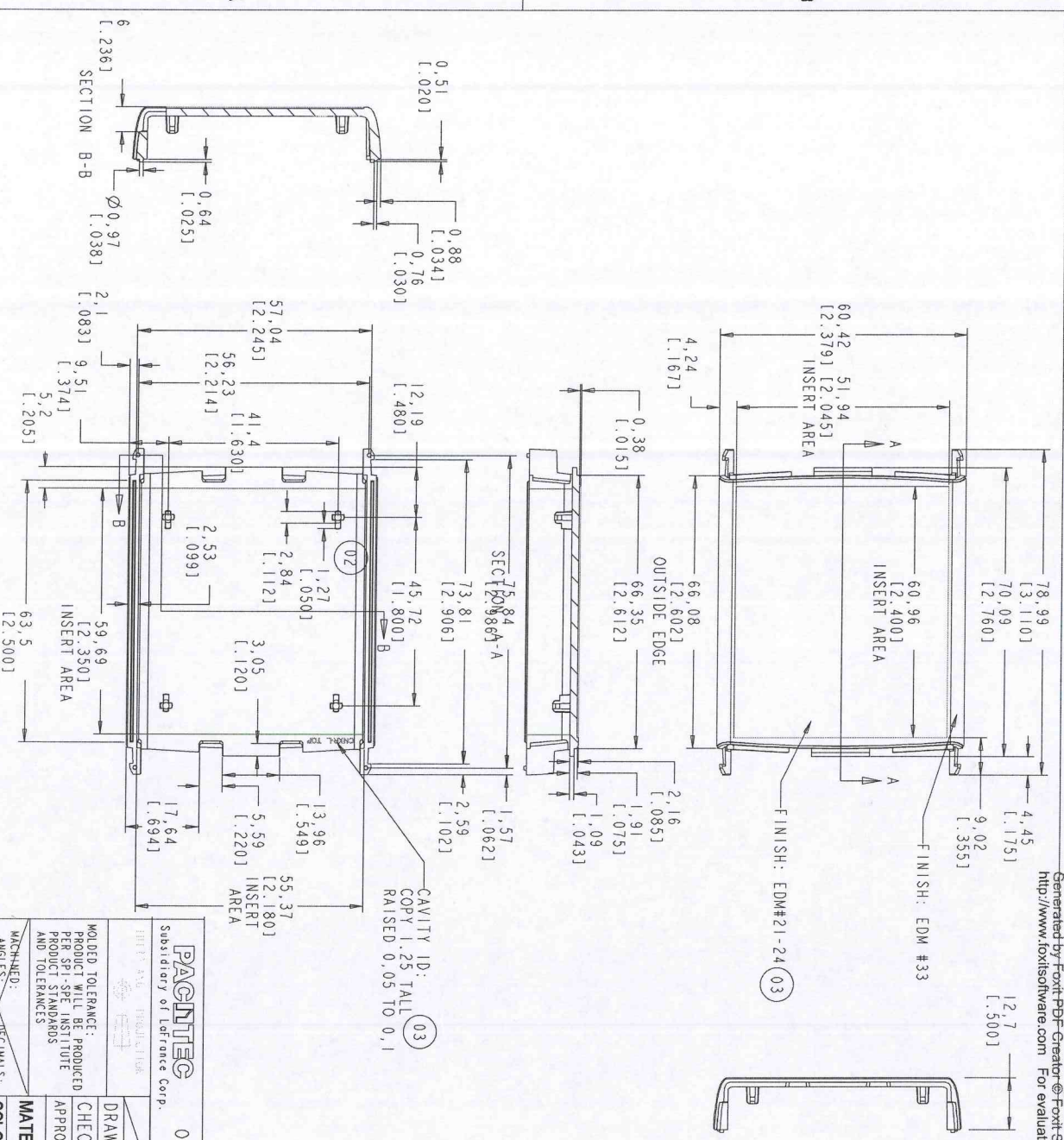


REVISIONS		DATE	INT
01	INITIAL RELEASE	04-08-12	Janves
02	ADDED PCB POSTS	05/10/12	JMM
03	CHANGED RECESS TEXTURE TO EDM, ADDED CAVITY ID	05-21-12	JMM

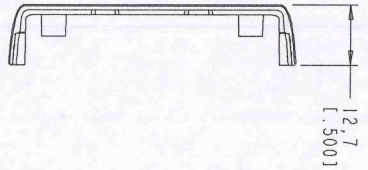
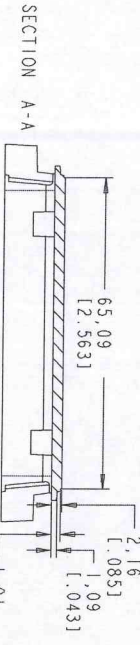
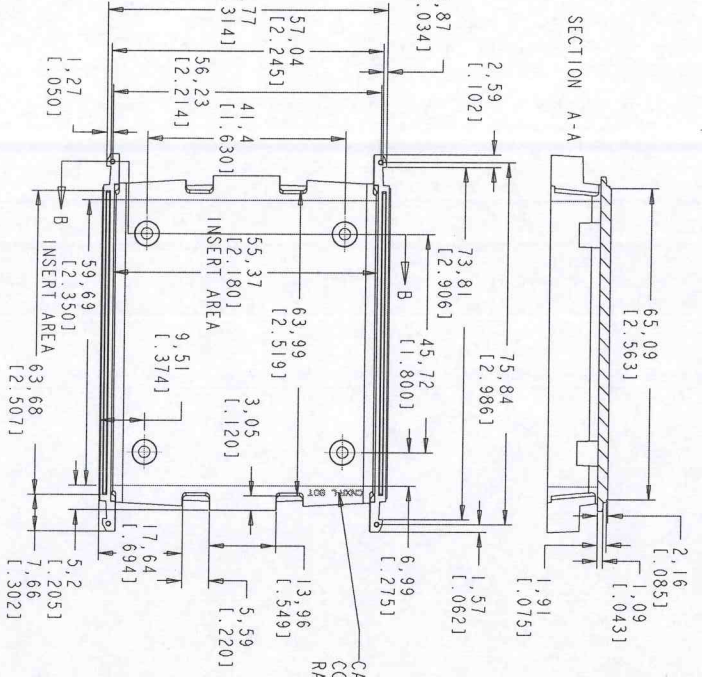
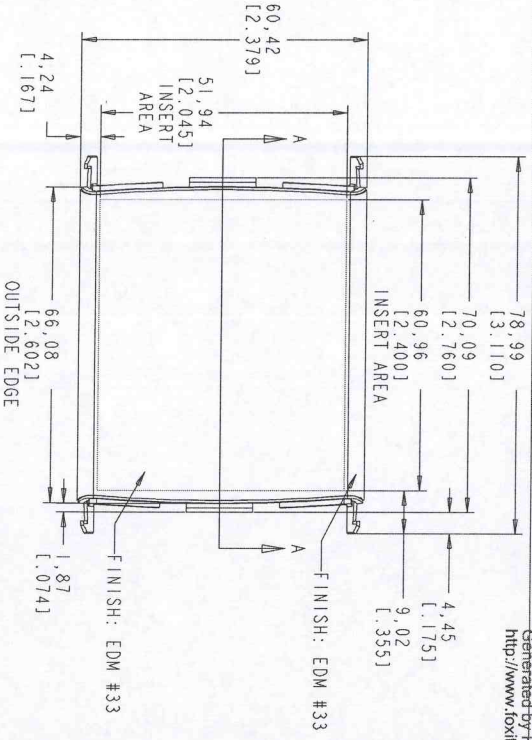


NOTES:

- FOR LIST OF MATERIAL SEE: PL 115129-501
- UNLESS OTHERWISE SPECIFIED: CORNERS SHOWN SHARP HAVE A RADIUS OF .01.
- NO KNOCKOUTS, GATES OR FLASH ON THE EXTERIOR SURFACES.
- FLASH PERMISSIBLE WITHIN .005 INCH.
- KNOCKOUTS FLUSH TO .005 BELOW SURFACE.
- TEXTURE: EDM #33
- LABEL RECESS: EDM#21-24
- INTERIOR FINISH: SPI C3 OR BETTER

PACNITEC
 Subsidiary of Lofrance Corp.
 One Lofrance way, Concordville, Pa. 19332-5002 U.S.A.

MOULDED TOLERANCE: PRODUCT WILL BE PRODUCED TO PRODUCT STANDARDS AND TOLERANCES	NAME Janves	DATE 04-08-12	PROCESS: INJ MOLDED	SCALE: SHEET 1 OF 1
DRAWN: Janves	CHECK: Ted	APPROVE:		
MATERIAL: ABS	COLOR: SEE PARTS LIST		DRAWING NUMBER 115122-01	REV 03



Generated by Foxit PDF-Creator
<http://www.foxitsoftware.com> For evaluation only

REVISIONS			
LET	ECN	DESCRIPTION	DATE
01		INITIAL RELEASE	04-08-12 Janves
02		ADDED CAVITY ID	05-22-12 JMM

NOTES:

1. FOR LIST OF MATERIAL SEE: PL 115129-501
2. UNLESS OTHERWISE SPECIFIED: CORNERS SHOWN SHARP HAVE A RADIUS OF .01.
3. NO KNOCKOUTS, GATES OR FLASH ON THE EXTERIOR SURFACES.
4. FLASH PERMISSIBLE WITHIN .005 INCH.
5. KNOCKOUTS FLUSH TO .005 BELOW SURFACE.
6. TEXTURE: EDM #33
7. INTERIOR FINISH: SPI C3 OR BETTER
 INTERIOR SIDEWALLS MAY HAVE EDM #30 FINISH (FOR PROCESSING PURPOSES)

CAVITY ID:
 COPY 1.25 TALL
 RAISED 0.05 TO 0.1

PACNITEC
 Subsidiary of LaFrance Corp.

One LaFrance way, Concordville, Pa. 19332-5002 U.S.A.

NAME	DATE	CNX-R-L BOTTOM COVER
DRAWN: Janves	04-08-12	
CHECK: Ted	04-08-12	
APPROVE:		
MATERIAL:		PROCESS:
COLOR: SEE PARTS LIST		SCALE:
		SHEET 1 OF 1
PART # 115122-02	DRAWING NUMBER 115122-02	REV 02

MOULD TOLERANCE:
 PRODUCT WILL BE PRODUCED PER SPI-SPE INSTITUTE PRODUCT STANDARDS AND TOLERANCES

MACHINED ANGLES: DECIMALS: .xxx ± 0.04